

PART OF THE S.1/2, OF SECTION 7, T.5N., R1W., S.L.B. & M.
THE LANDING AT 4400 P.U.D.

314

TAXING UNIT: 413

IN RIVERDALE CITY
SCALE 1" = 30'

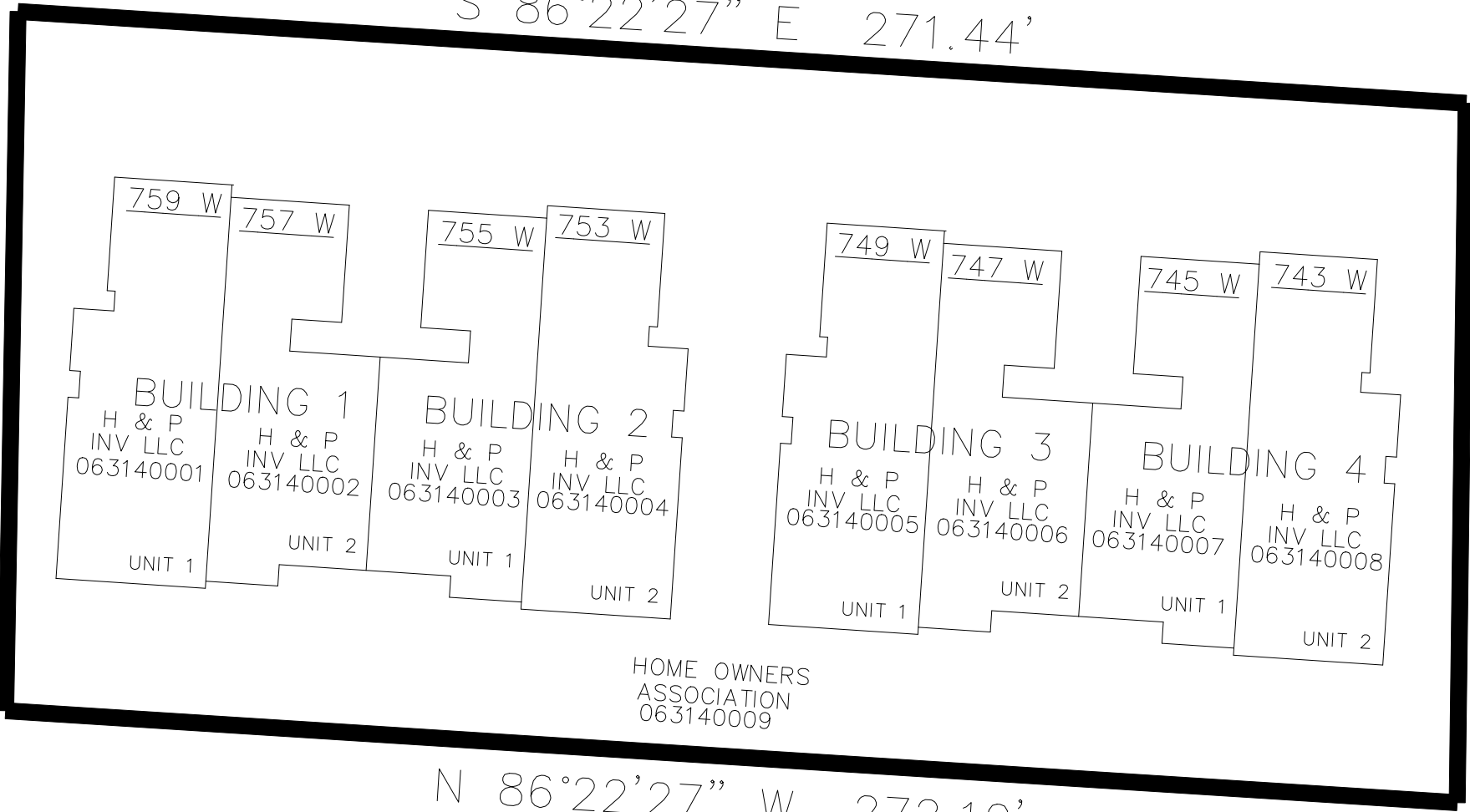
SEE PAGE 15

4400 SOUTH STREET

S 86°22'27" E 271.44'

SEE PAGE 15

N 1°00'58" E 130.89'



SEE PAGE 15

S 0°43'45" W 130.92'

N 86°22'27" W 272.10'

SEE PAGE 308

10' UTILITY & DRAINAGE EASEMENTS EACH
SIDE OF PROPERTY LINES AS INDICATED
BY DASHED LINES EXCEPT AS OTHERWISE
SHOWN.

FOR DETAILED INFORMATION OF
COMMON AREA, RESTRICTED COMMON
AREA, AND BUILDING DIMENTIONS,
SEE DEDICATION PLAT.

FOR COMPLETE ENG DATA SEE
ORIGINAL DEDICATION PLAT IN
BOOK 69, PAGE 76 OF RECORDS.